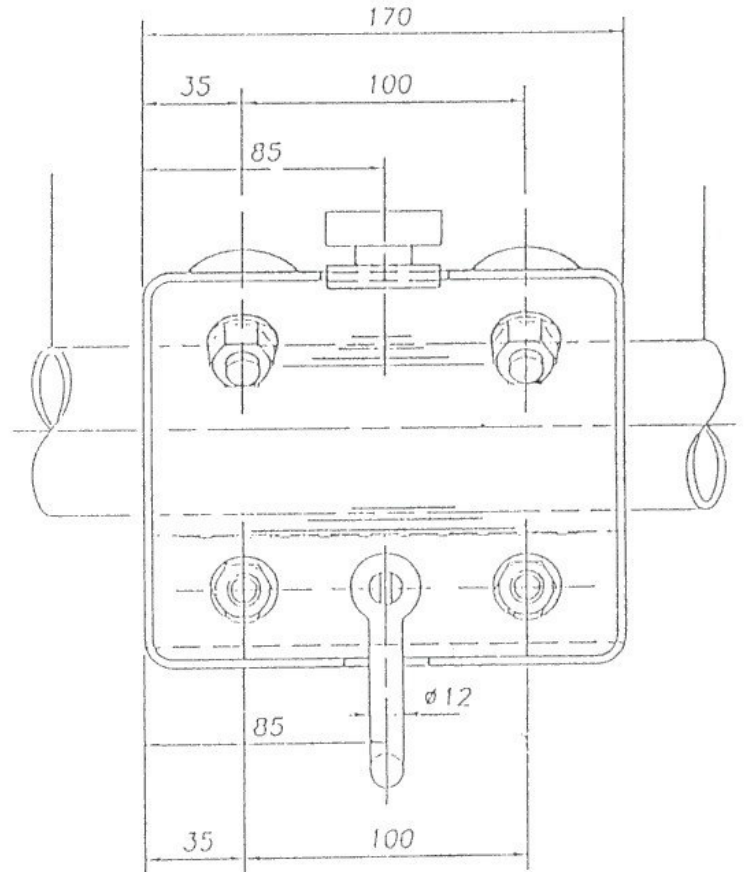
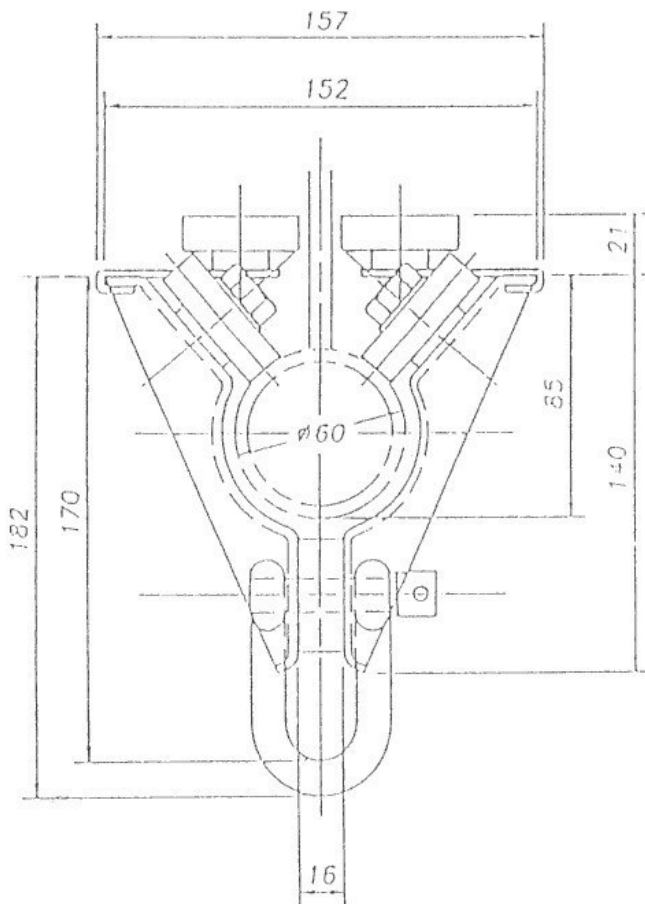


# PRESSED STEEL BODY PIPE TROLLEY

## AX SERIES



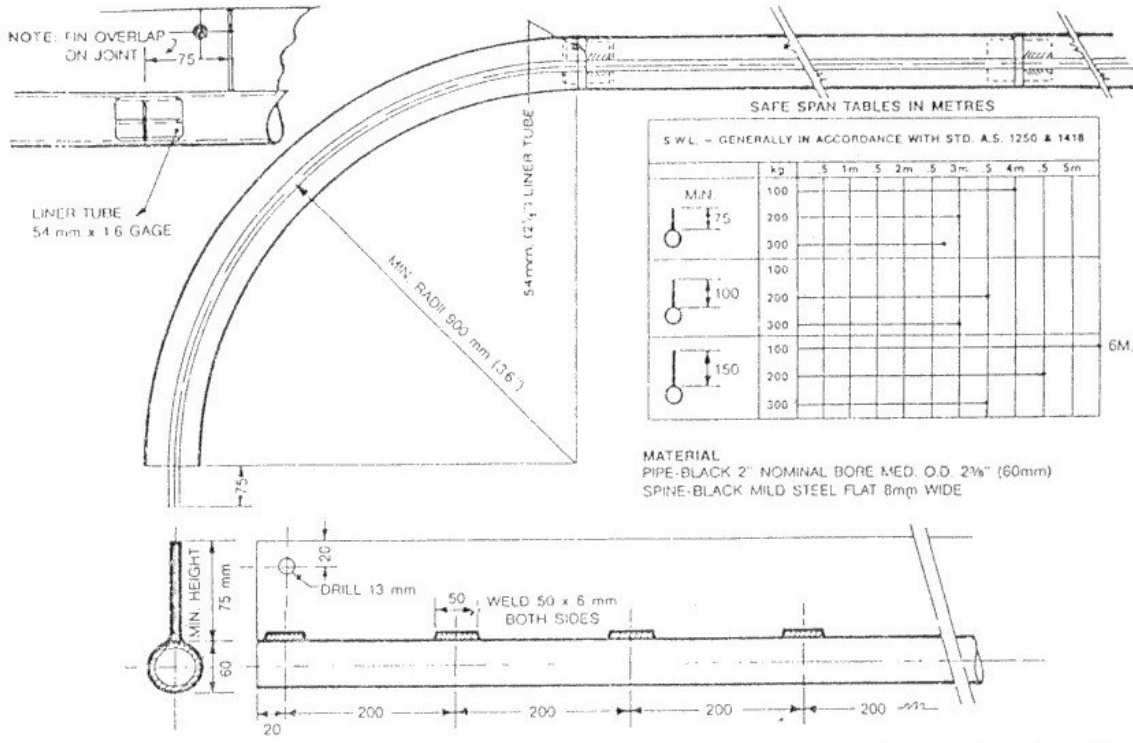
### AX SERIES RANGE

Part No.	SWL	Pipe size	Trolley finish
AX060	50 kg	40mm / 1 1/2" pipe	Galvanised sheet pressing
AX050	50 kg	50mm / 2" pipe	Galvanised sheet pressing
AX010	250 kg	40mm / 1 1/2" pipe	Powder coated - Bistro Orange
AX000	250 kg	50mm / 2" pipe	Powder coated - Bistro Orange
AX500	500 kg	50mm / 2" pipe	Galvanised side plates
AX750	750 kg	50mm / 2" pipe	Galvanised side plates

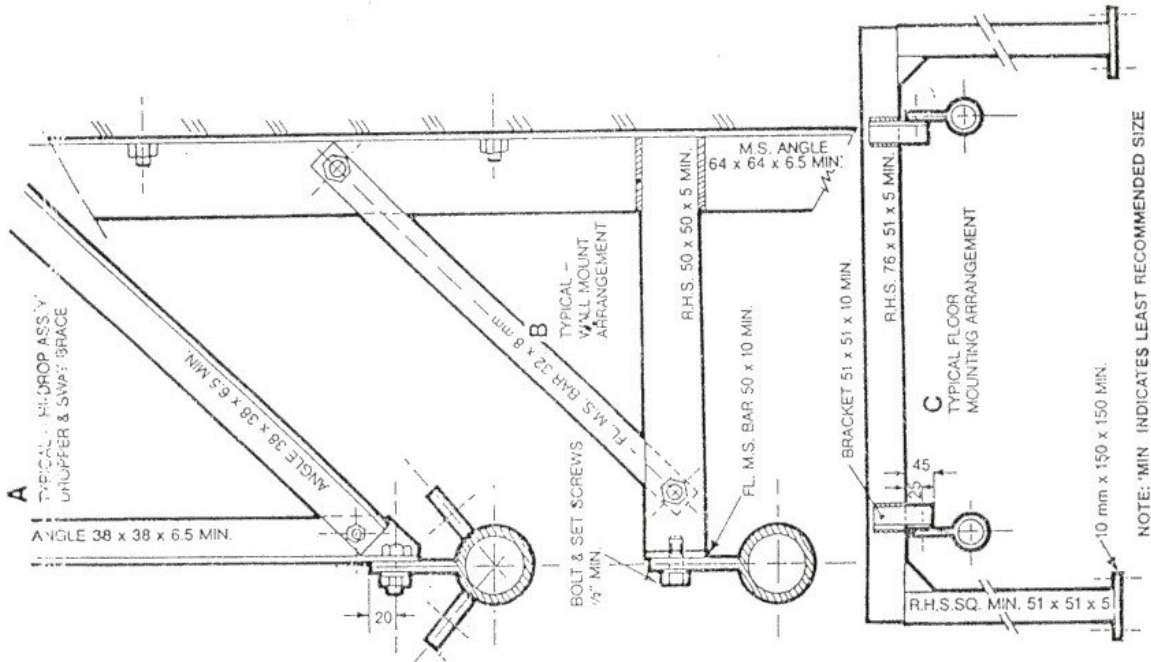
**All of the AX series range have with the following options available:**

- Top Wheels
- Spacer Bars
- Bottom Wheels (2" pipe only)
- Side Guide Rollers
- Dee Hanger
- HMWPE Tyres

# MAKE YOUR OWN FROM THIS TYPICAL TRACK CONSTRUCTION



## TYPICAL TRACK-HANGER ARRANGEMENT



FOR MORE INFORMATION PLEASE DO NOT HESITATE TO CONTACT OUR OFFICE

Factory 2,  
18-20 McDougal Road,  
Sunbury,  
Victoria 3429.  
Telephone (03) 9740 9143.  
Facsimile (03) 9744 6749.